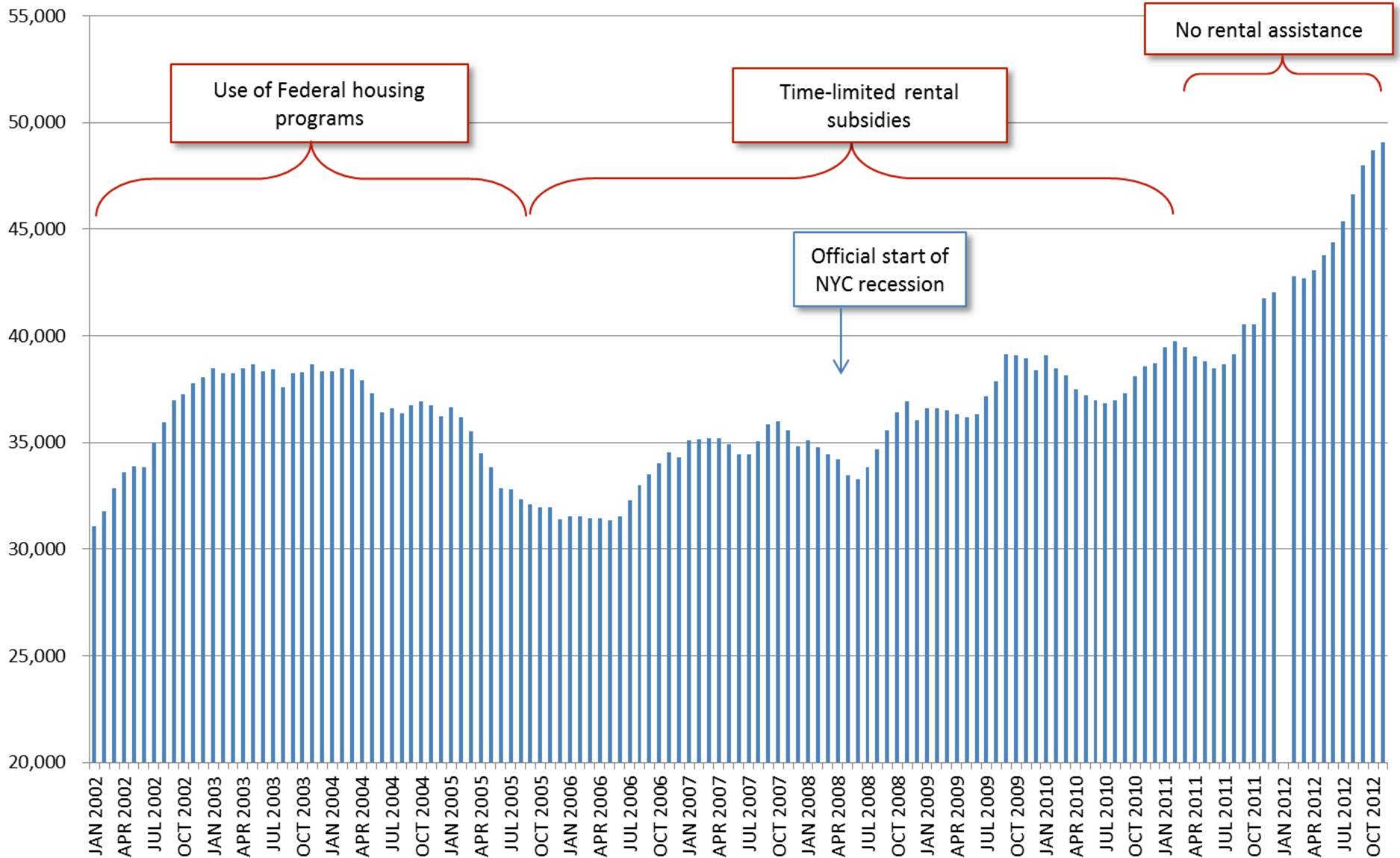
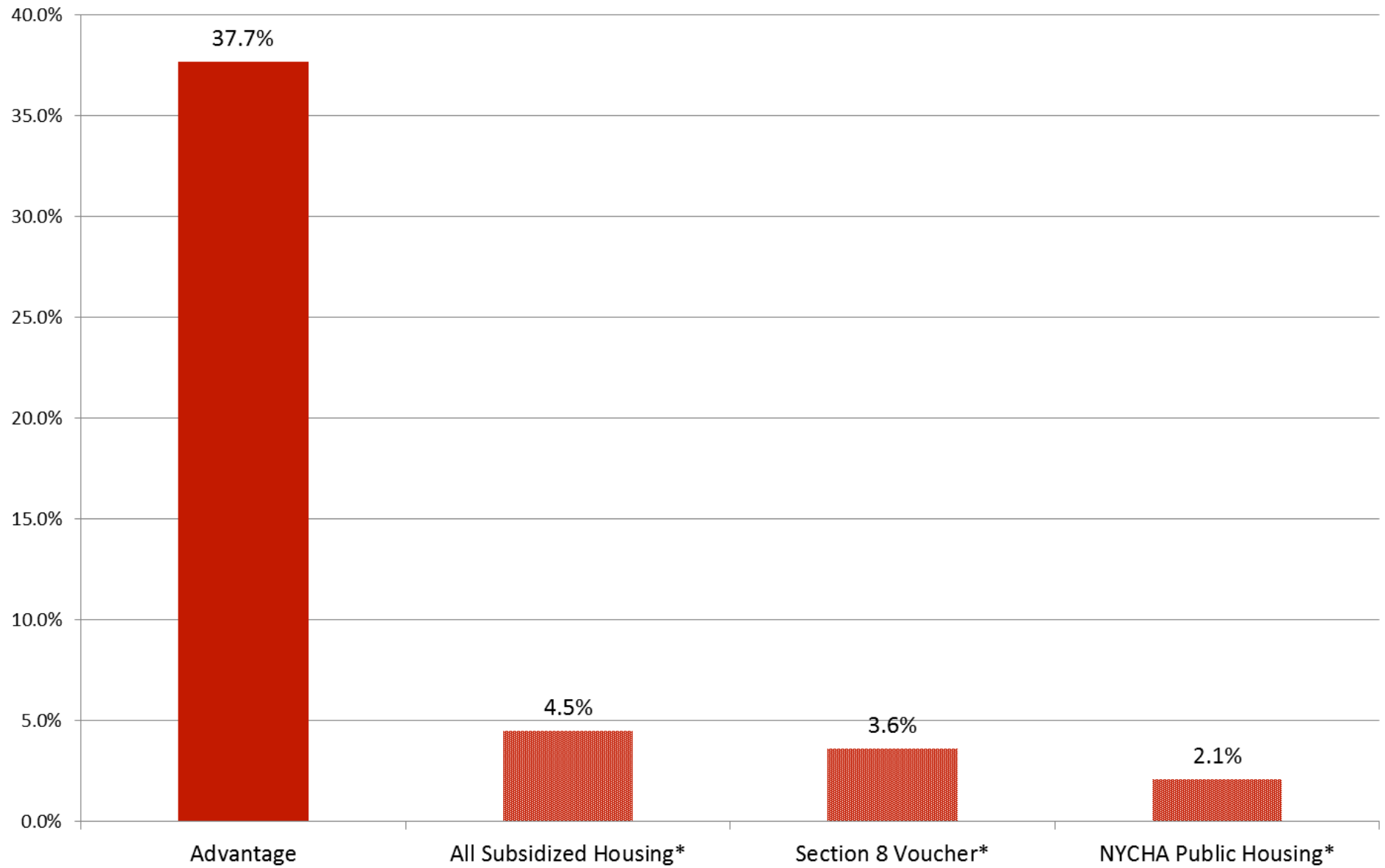


# New York City Homeless Shelter Population Under Mayor Bloomberg 2002-2012



Data Source: New York City Department of Homeless Services

## Shelter Return-Rate for Time-Limited and Non-Limited Subsidies

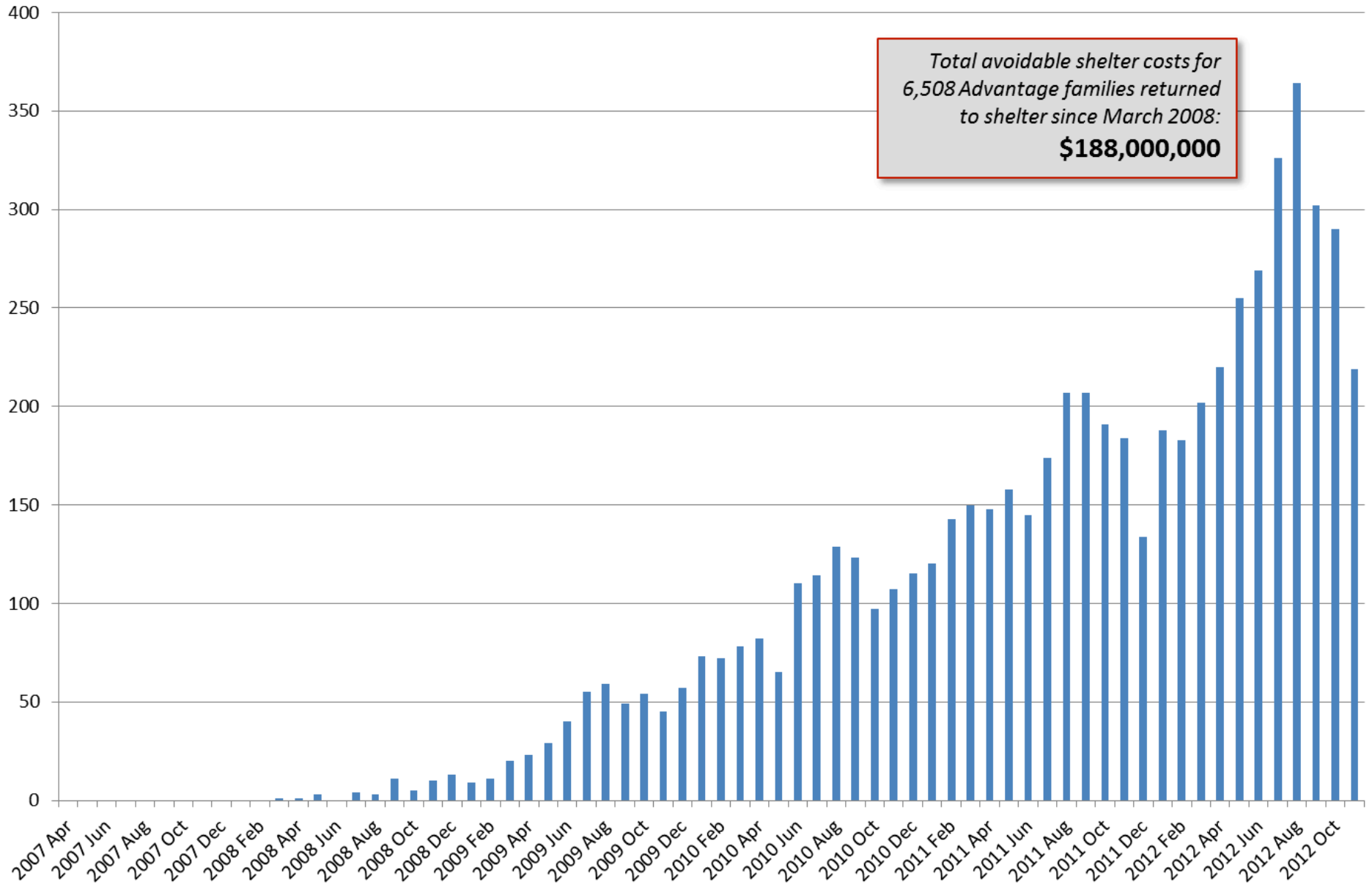


*\*Refers to families who exited shelter from 1994 to 2001*

**Source:** NYC Department of Homeless Services and Vera Institute, "Understanding Family Homelessness" (2005)

# Advantage Families Returning to Shelter Each Month

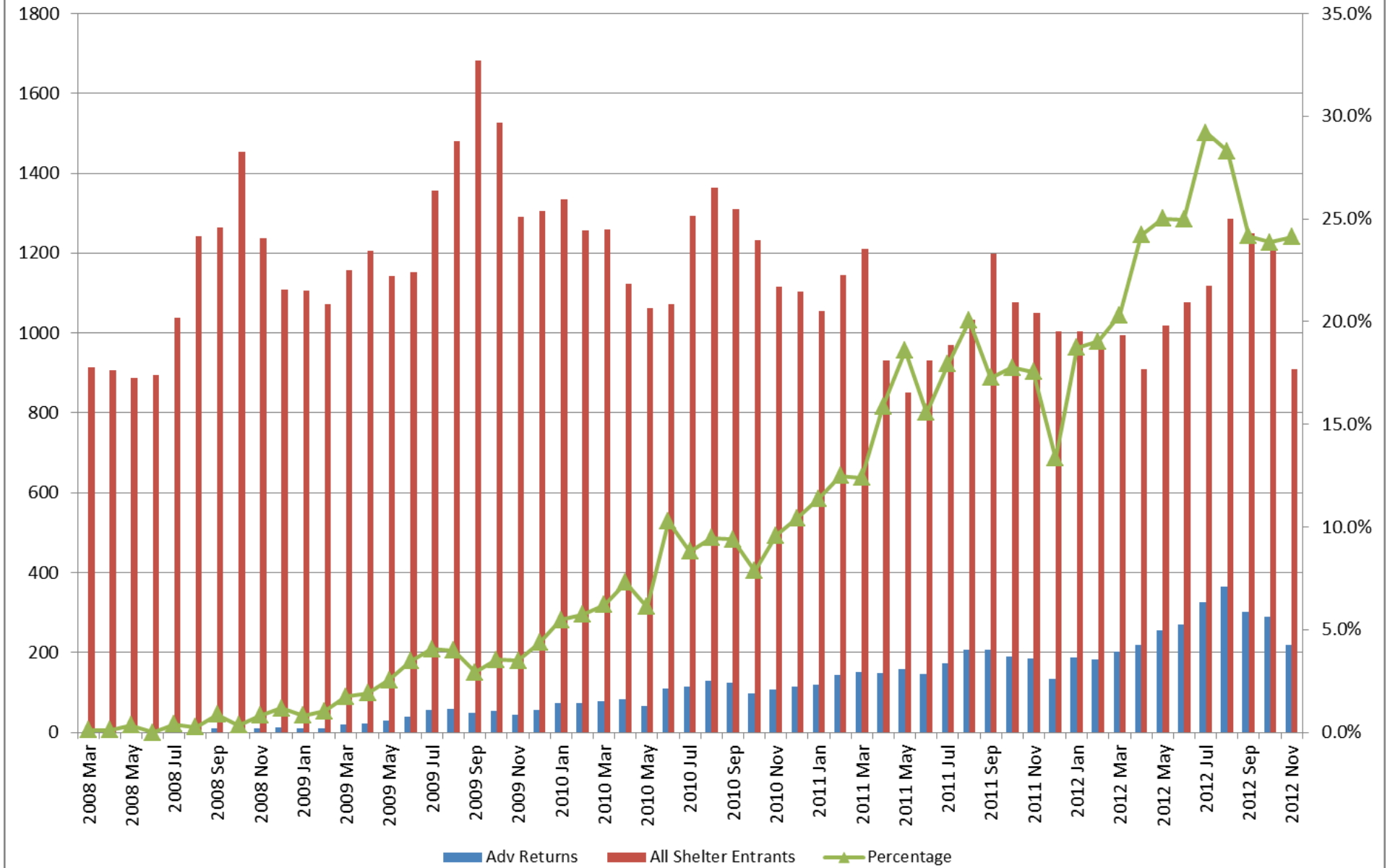
## Start of Program - November 2012



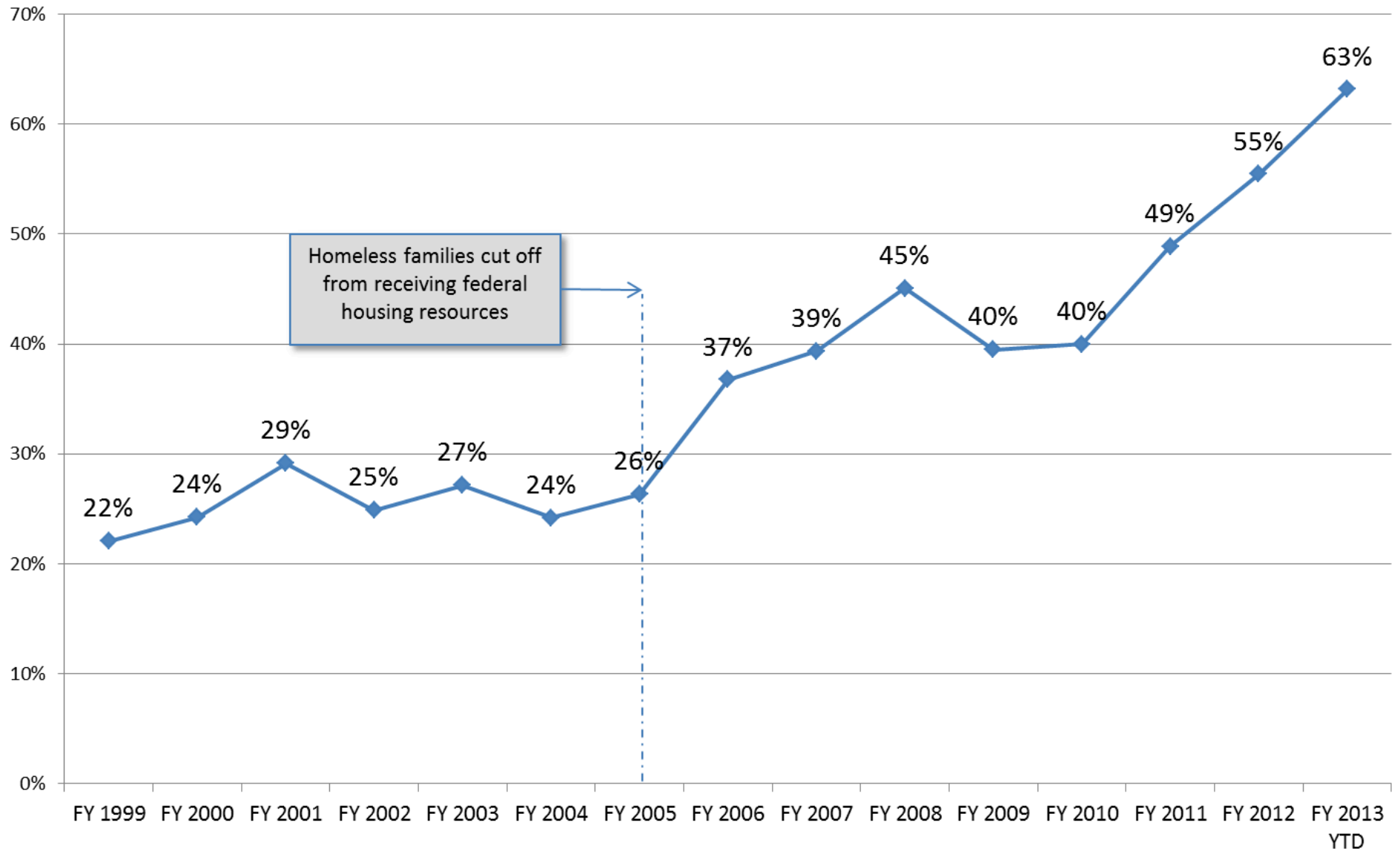
Total avoidable shelter costs for 6,508 Advantage families returned to shelter since March 2008:  
**\$188,000,000**

# Advantage Returns as a Percentage of Total Shelter Entrants

## March 2008 to November 2012

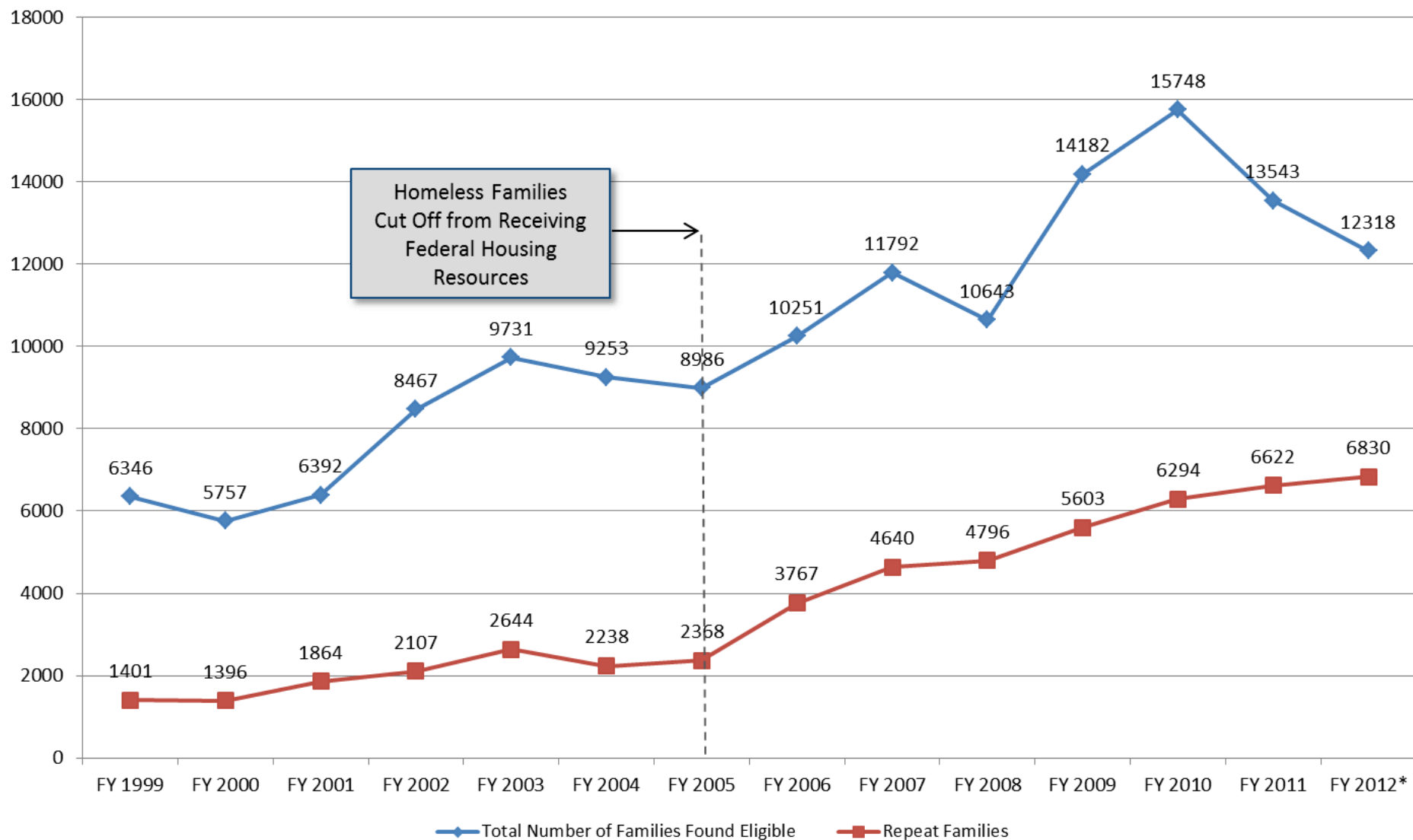


## Percentage of Families Who Have Had Prior Shelter Stays FY 1999 to FY 2012



Data Source: NYC Department of Homeless Services

## Total Families Entering the Shelter System and Those with Prior Episode of Homelessness, 1999 - 2012



**Data from the Department of Homeless Services (DHS). Note for FY 2012 Data:** Two months of data are permanently missing from DHS's record. As a result, we estimated their value based on existing trends.