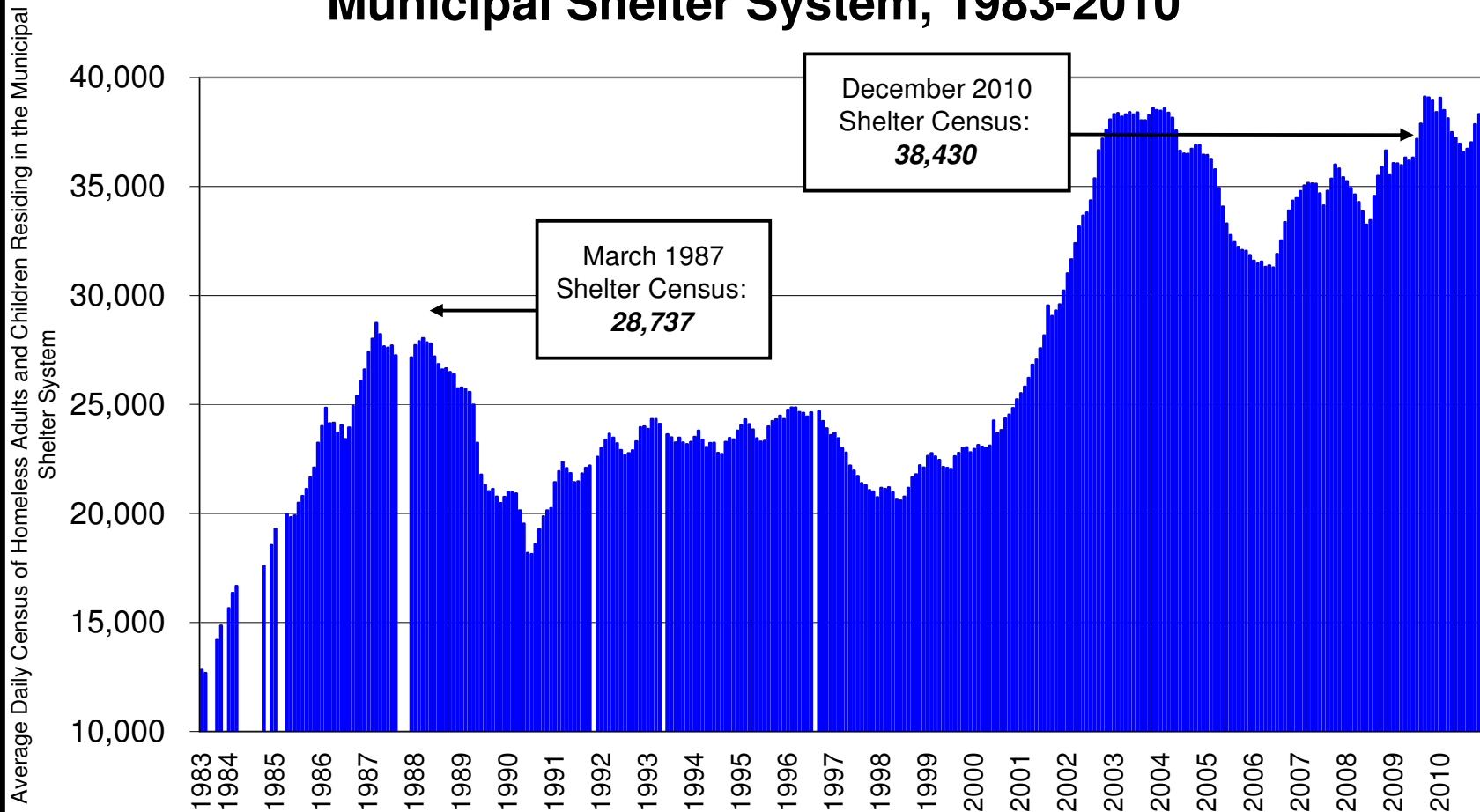
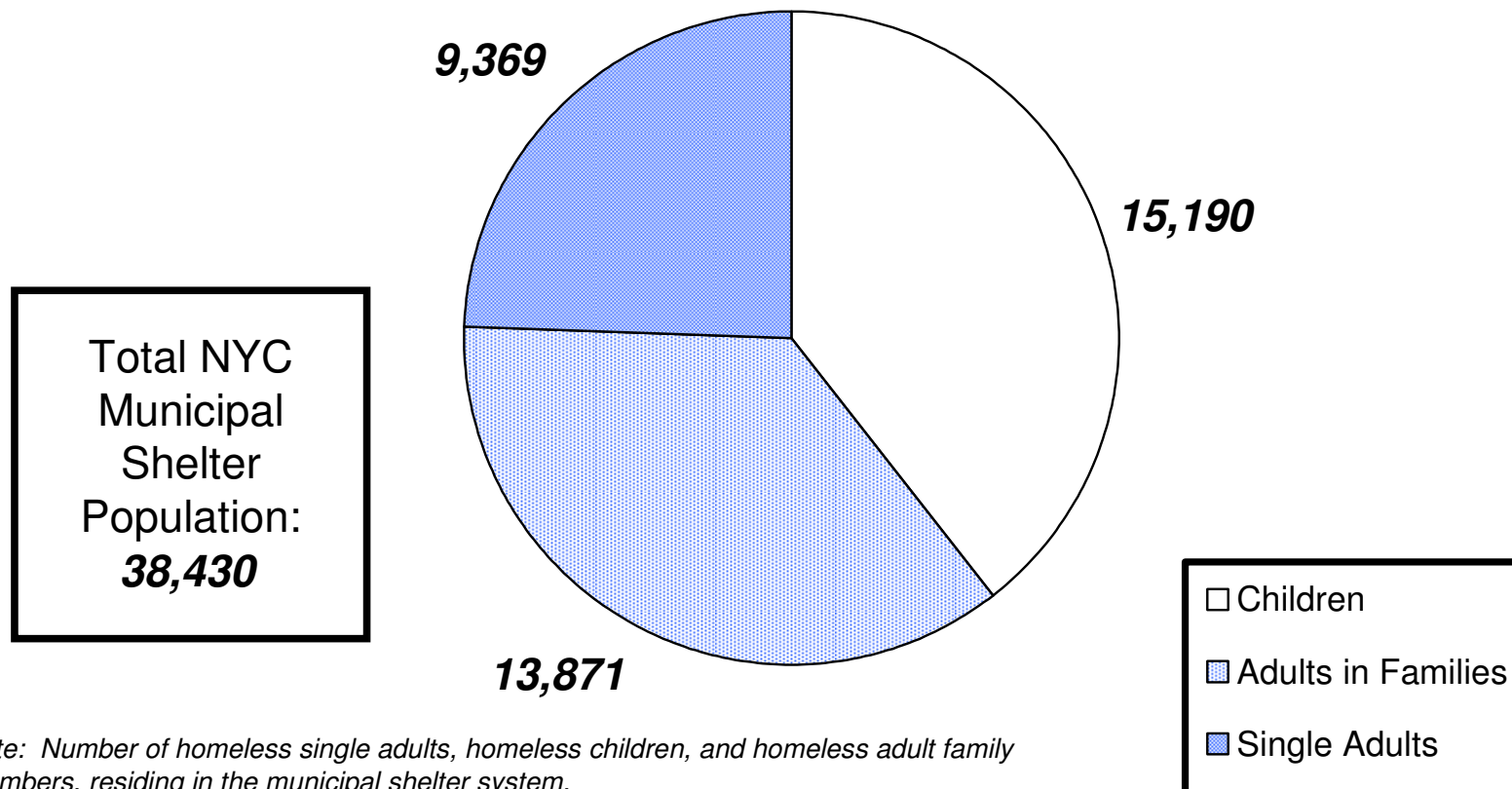


## New York City: Census of Homeless People in the Municipal Shelter System, 1983-2010



Source: New York City Department of Homeless Services and Human Resources Administration, shelter census reports  
Prepared by Patrick Markee, Coalition for the Homeless, 212-776-2004

## New York City: Census of Homeless People in the Municipal Shelter System, December 2010



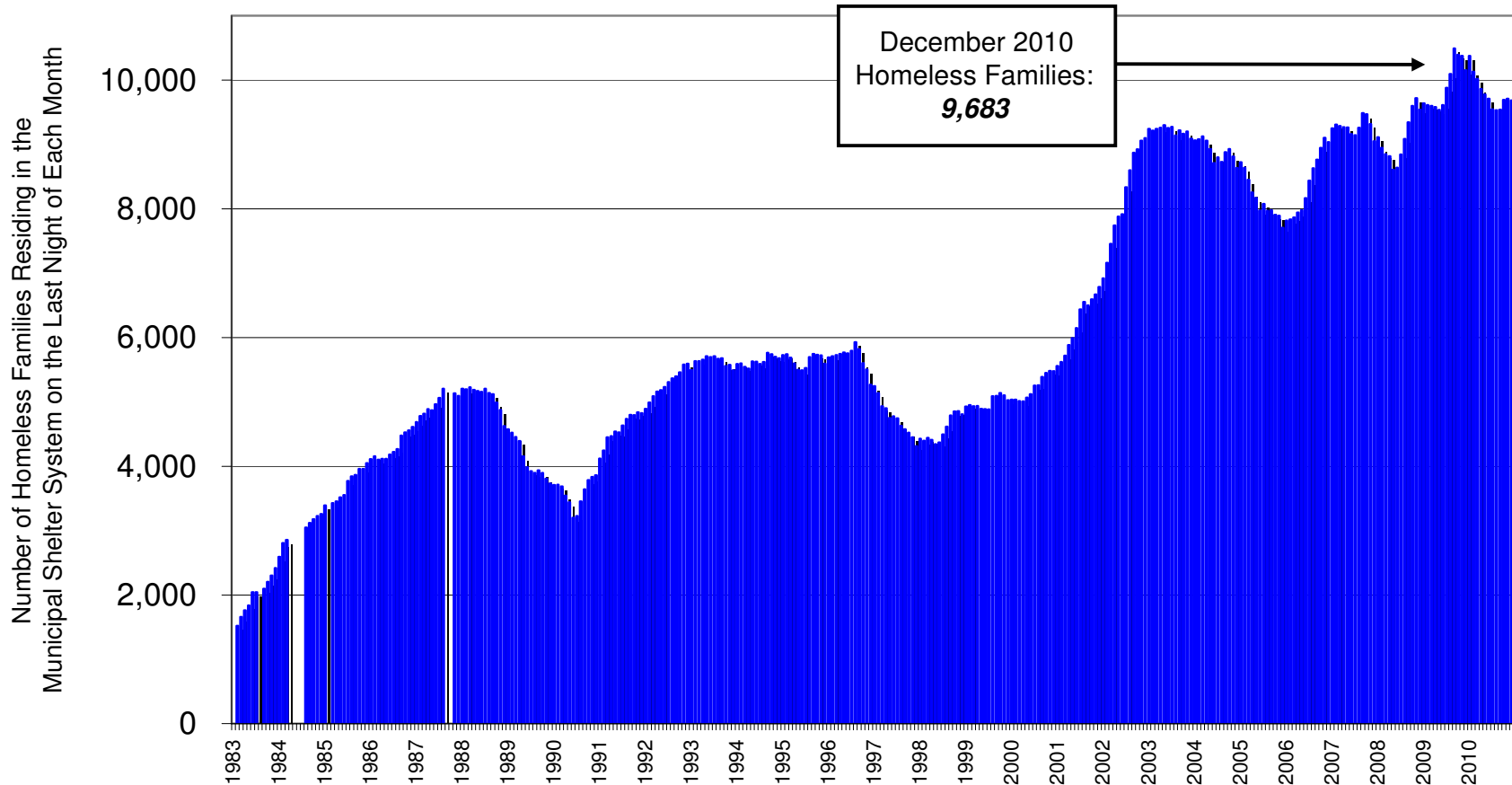
*Note: Number of homeless single adults, homeless children, and homeless adult family members, residing in the municipal shelter system.*

*Source: New York City Department of Homeless Services, shelter census reports*

*Prepared by Patrick Markee, Coalition for the Homeless, 212-776-2004*

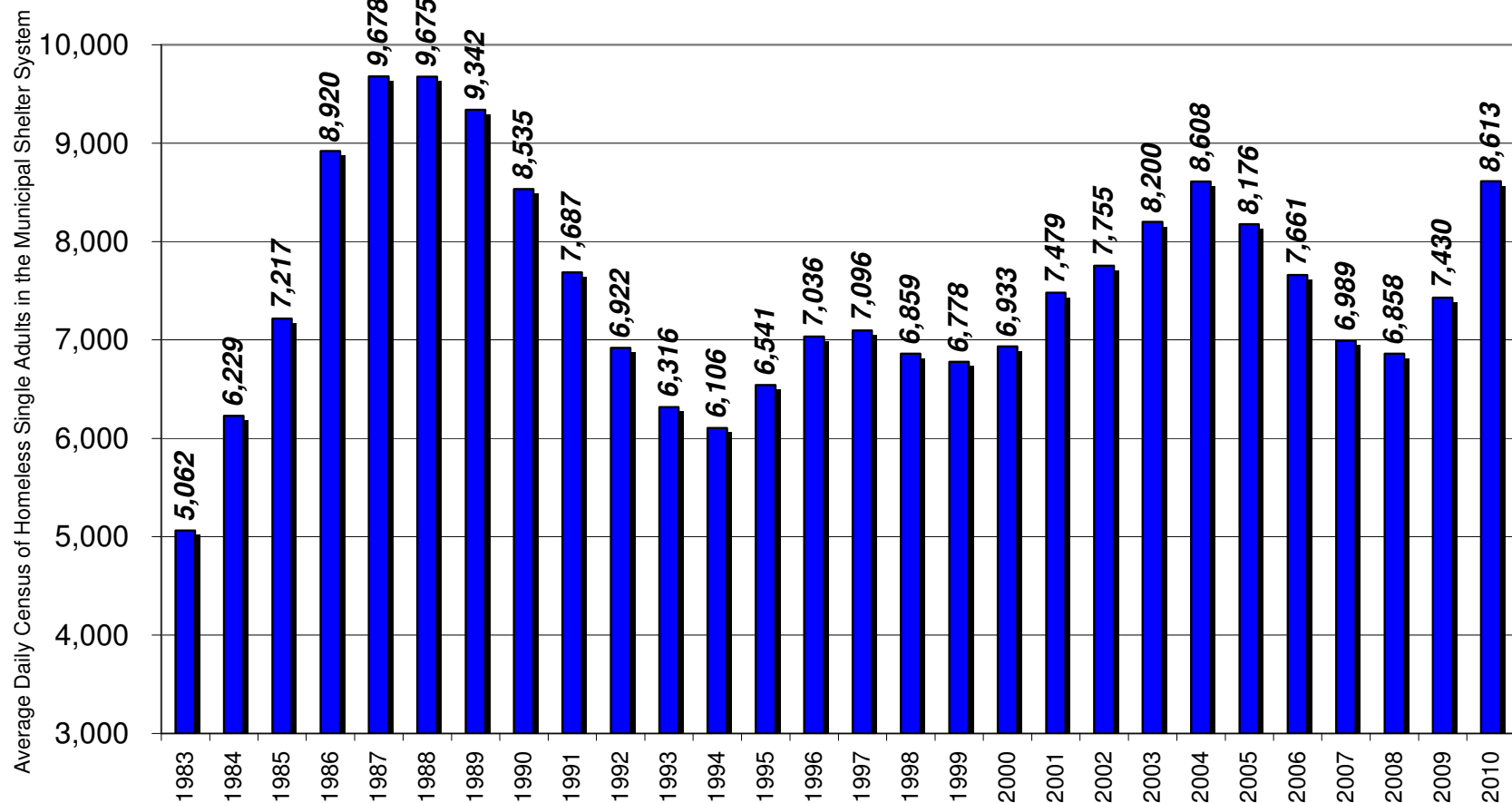


## Number of Homeless Families in the New York City Shelter System, 1983-2010



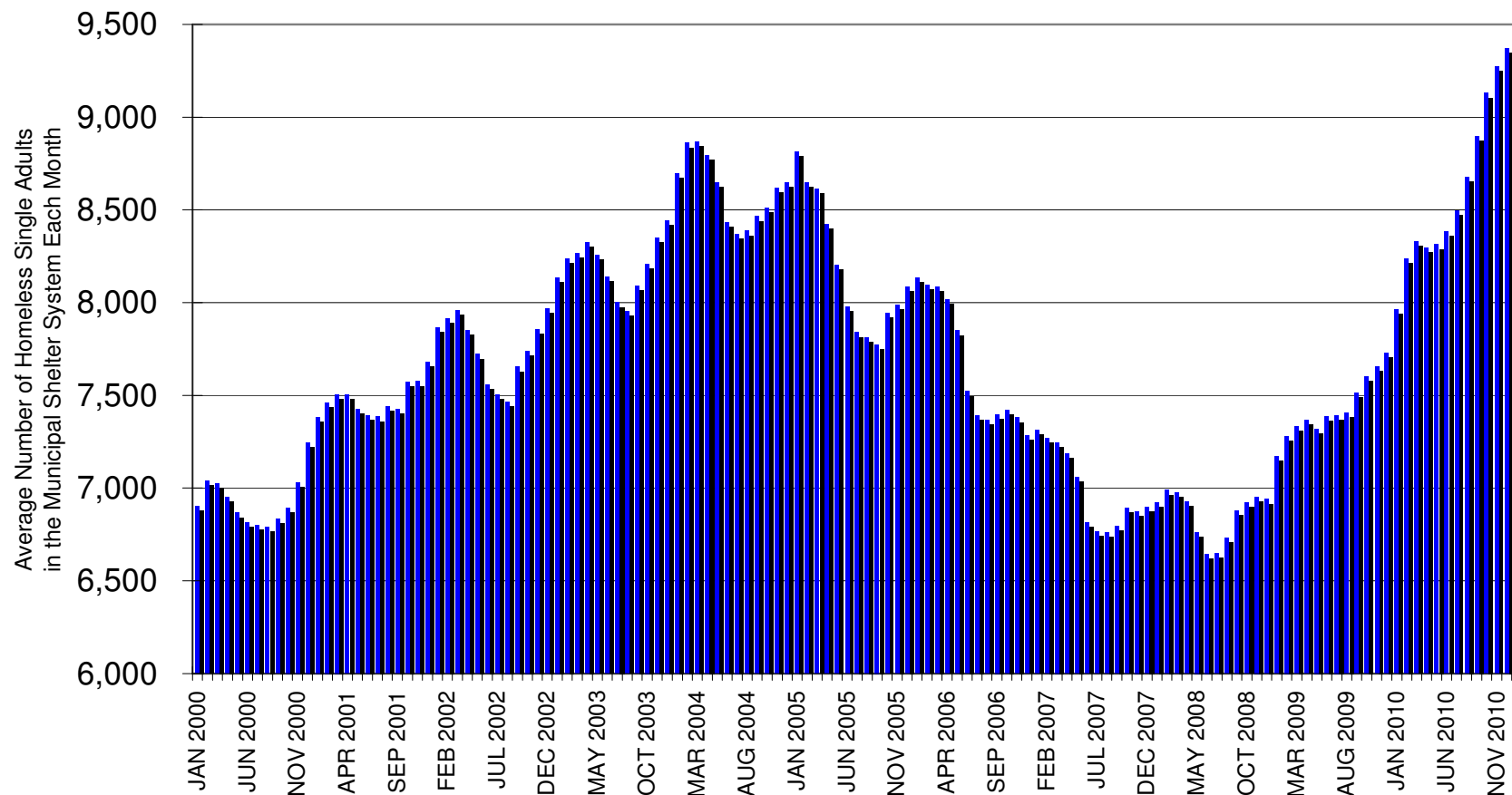
Source: New York City Department of Homeless Services and Human Resources Administration, shelter census reports  
Prepared by Patrick Markee, Coalition for the Homeless, 212-776-2004

## New York City: Average Daily Census of Homeless Single Adults in the Municipal Shelter System, 1983-2010



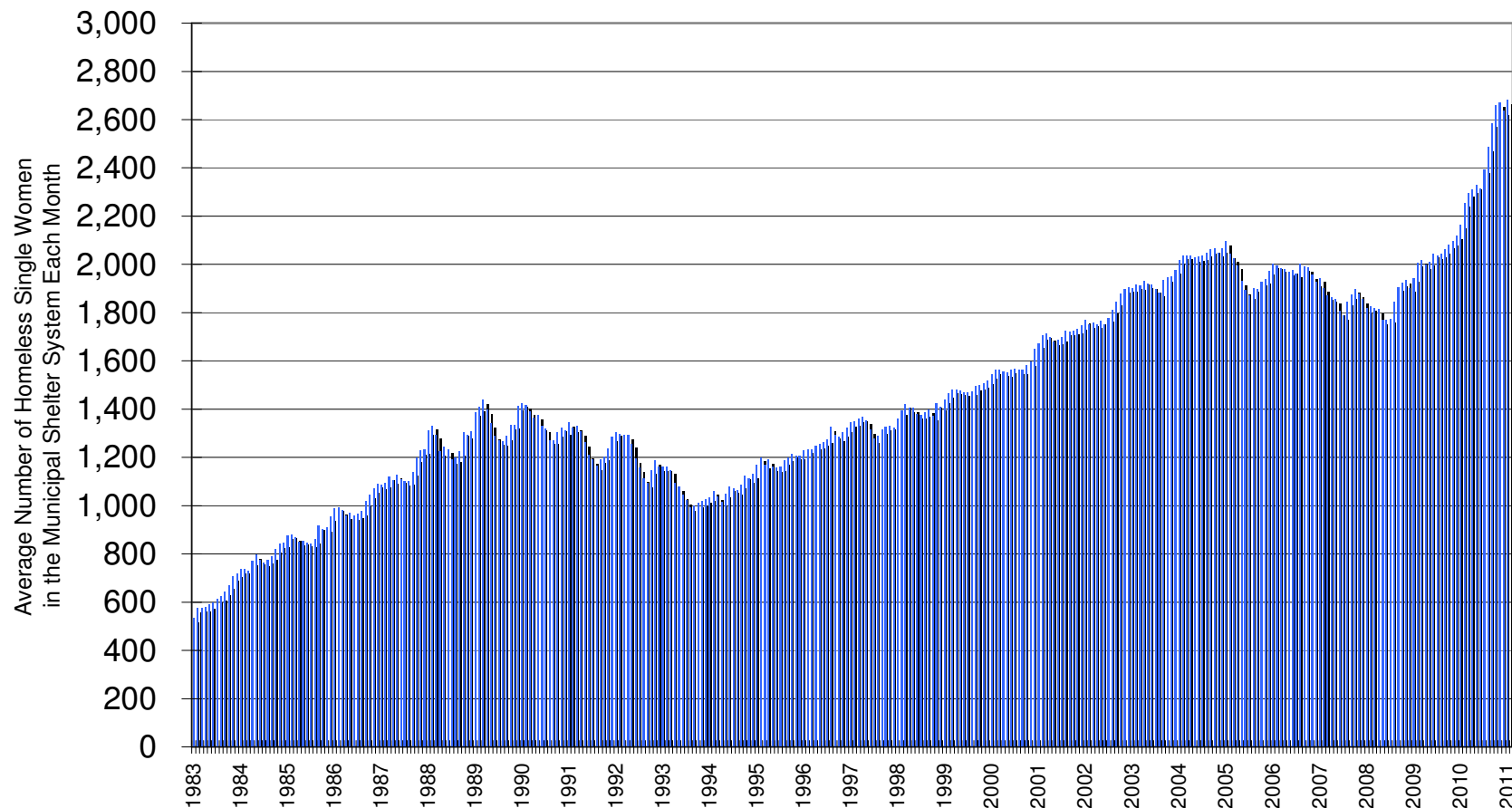
Source: New York City Department of Homeless Services and Human Resources Administration, shelter census reports  
Prepared by Patrick Markee, Coalition for the Homeless, 212-776-2004

## New York City: Average Daily Census of Homeless Single Adults in the Municipal Shelter System, 2000-2010



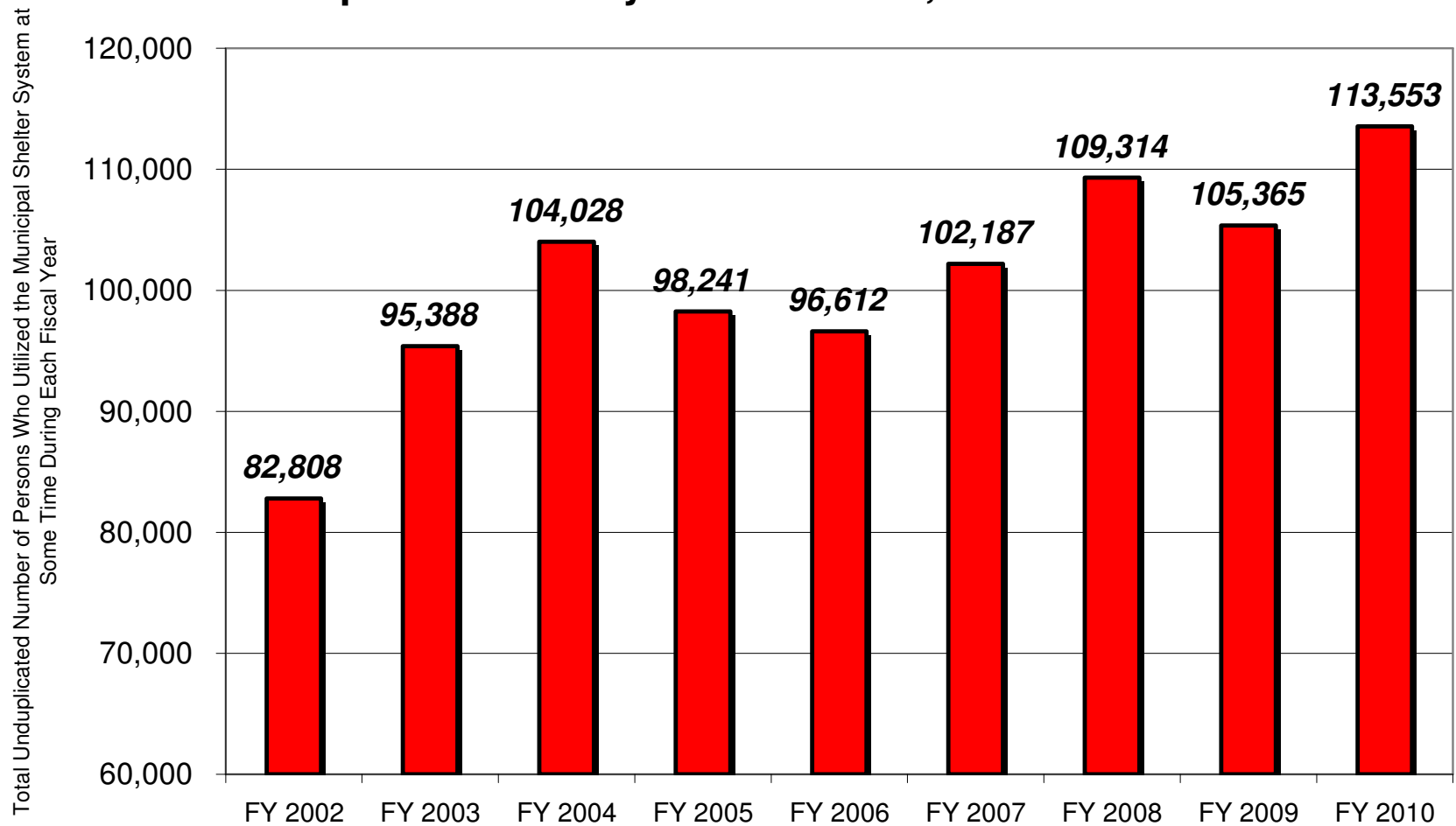
Source: New York City Department of Homeless Services, shelter census reports  
Prepared by Patrick Markee, Coalition for the Homeless, 212-776-2004

## New York City: Average Daily Census of Homeless Single Women in the Municipal Shelter System, 1983-2011

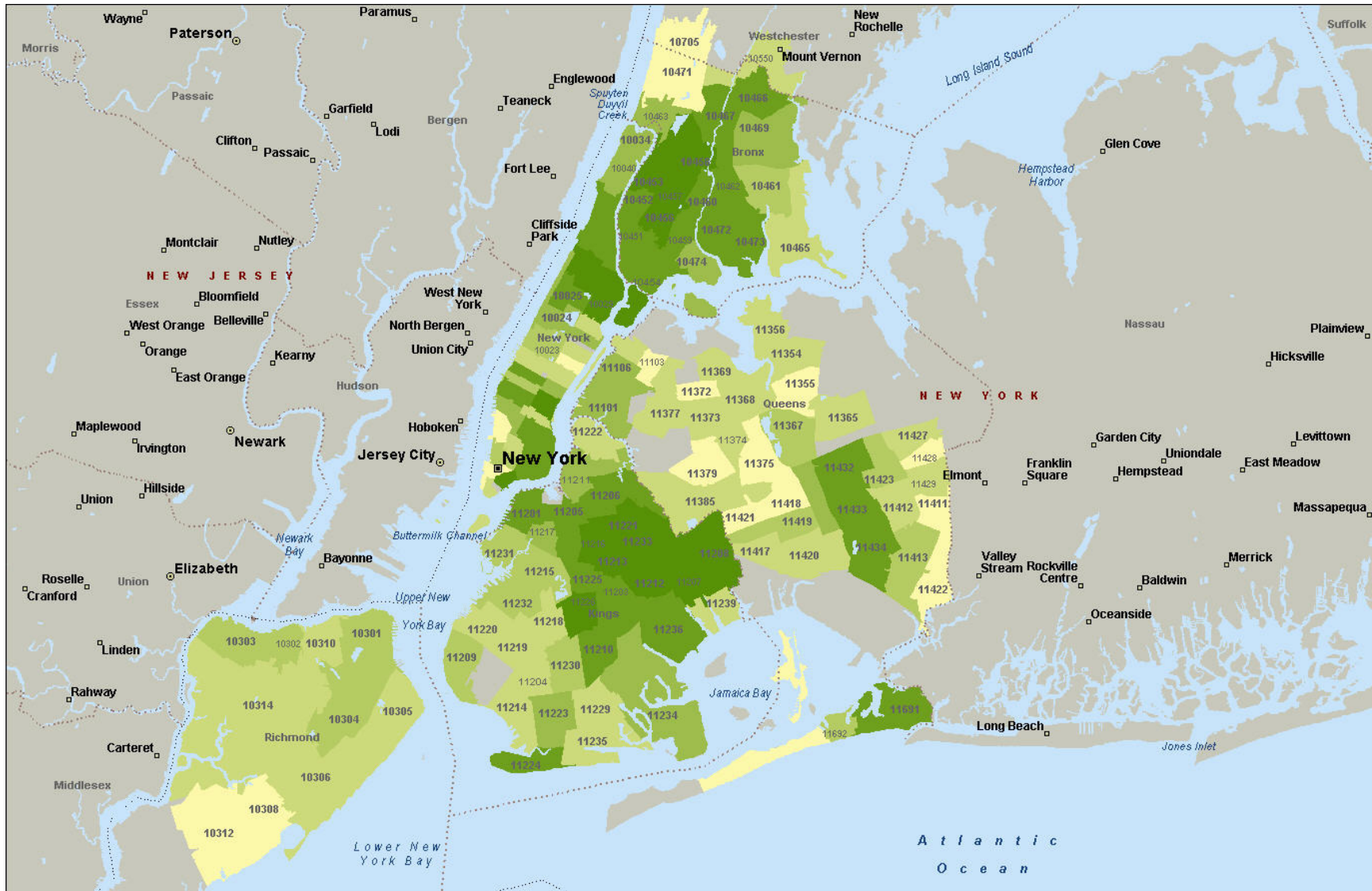


Source: New York City Department of Homeless Services and Human Resources Administration, shelter census reports  
Prepared by Patrick Markee, Coalition for the Homeless, 212-776-2004

## NYC: Number of Different Homeless Adults and Children Who Slept in Shelter System Per Year, FY 2002-FY 2010



Source: NYC Department of Homeless Services, Critical Activities Reports



**This map shows where new Coalition clients came from by zip code in 2010. The concentration is indicated by the shades of green, with yellow representing the lowest concentration, and dark green representing the highest concentration of 100 or more.**